



RACING GUIDELINE

WINTER 20/21

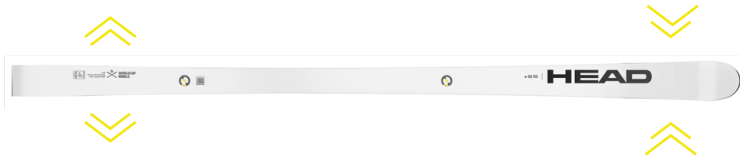
HEAD[®]
.COM

WHAT'S NEW?

New sidecut:

Slightly narrower at the shovel and wider at the rear - provides more thrust following the turn.

--> WC Rebels e-GS RD FIS in 193 and 188 cm



New in the MASTERS-Line:

2 new lengths (177/189) added to the Masters range to meet the expectations of Masters skiers. Slightly wider sidecut, more forgiving, shorter radius than the original FIS ski. Requires less strength.

--> WC Rebels e-GS RD Pro

For young athletes:

e-SL RD with 151 cm new to the range so young athletes don't have to use TEAM skis.

--> WC Rebels e-SL RD - 151 cm



New Tip Protector

Slalom pole impact absorbed better thanks to new ergonomic shape.

-> All WC Rebels e-SL RD models



EMC:
Energy Management Circuit replaces KERS.
-> All models



Wider tail:

Higher acceleration following the turn.

-> All WC Rebels e-SL RD models

MODEL	FRONT (cm)	CENTRE (cm)	REAR (cm)	RADIUS (cm)	LENGTH (cm)	PLATE	FIS	EDGE-ANGLE	BASE STRUCTURE	BASE MATERIAL	INFRARED WAXING	WOOD CORE	MP (cm)
WC Rebels e-GS RD FIS	100	65	84	30.6	193	HEAD Race Plate WCR 14 BK SHORT	R>30	Side 88° Base tuning 0,4°	Structure 4 + Replaceable base strips	OKULEN 7150C	YES	ASH	83.0
WC Rebels e-GS RD FIS	98	65	84	30.1	188		R>30						81.5
WC Rebels e-GS RD FIS	99	65	81	30.5	183		R>30						79.0
WC Rebels e-GS RD Pro	107	68	87	28.0	191		R>27						81.5
	104	68	89	27.0	189		R>23						82.0
	104	68	89	25.4	183								79.0
	106	68	90	22.0	177								75.5
WC Rebels e-GS RD	104	65	87	25.0	186		R=25 / ≤65						80.5
	102	65	86	25.0	181		R=25 / ≤65						77.0
	102	65	87	23.0	176		R>23 / ≤65						75.5
	102	65	85	27.5	188	R>27 / ≤65	81.5						
	102	65	87	23.0	176	HEAD Race Plate WCR Team	75.5						
	102	65	86	25.0	181		81.5						
	119	68	103	12.8	168		72.5						
WC Rebels e-SL RD FIS	118	67	104	12.3	165	HEAD Race Plate WCR 14 BK SHORT	L=168	P-TEX 5188	73.5				
	114	66	99	12.4	158		L=165			68.0			
	114	66	100	12.4	156		L=158			66.5			
WC Rebels e-SL RD	111	65	96	11.9	151		L=156			63.0			
DH/SG													
DH 218 Race Plate	92	65	80	50.0	218	HE DH 02		Side 88° Base tuning 0,6°	Structure 4	P-TEX 5920 E	YES	ASH	95.5
DH 215 Race Plate	92	65	79	50.0	215								94.5
DH 210 Race Plate	91	65	78	50.0	210								91
SGM 213 Race Plate	95	65	79	45.0	213								93
SGL 207 Race Plate W	95	65	80	42.0	207								89.5
SGM 207 Race Plate M	93,5	65	78	45.5	207								89.5
SGL 202 Race Plate	95	65	79	40.5	202								88
SG 200 RP WCR 14	97	65	81	36.0	200								87
SG 195 RP WCR 14	98	65	82	33.0	195								84.5
SG 185 RP WCR 14	98	65	81	30.0	185								79.5
SG 175 RP WCR 14	93	65	82	27.0	175	74.5							
JUNIOR													
WC iGS RD Team	104	65	88	21.0	173	HEAD Race Plate WCR Team	≤65 R>17	Side 88° Base tuning 1,0°	Structure 3	OKULEN 7150C	NO	BUCHE	74.0
	105	65	89	18.5	166								71.5
	104	64	87	17.2	159								69.0
	101	64	85	17.2	152								65.5
	104	64	87	14.2	145								62.0
	101	64	84	14.2	138								58.5
	97	63	80	14.2	131								56.0
94	63	78	14.2	124	52.0								
114	65	99	12.0	156	≤65 R>14		65.5						
110	64	94	12.1	150			62.5						
110	64	94	11.0	144		59.5							
110	63	93	9.0	138		56.5							
110	63	93	9.0	132		54.5							
108	62	91	8.5	126		52.0							
105	62	89	8.0	120		49.5							

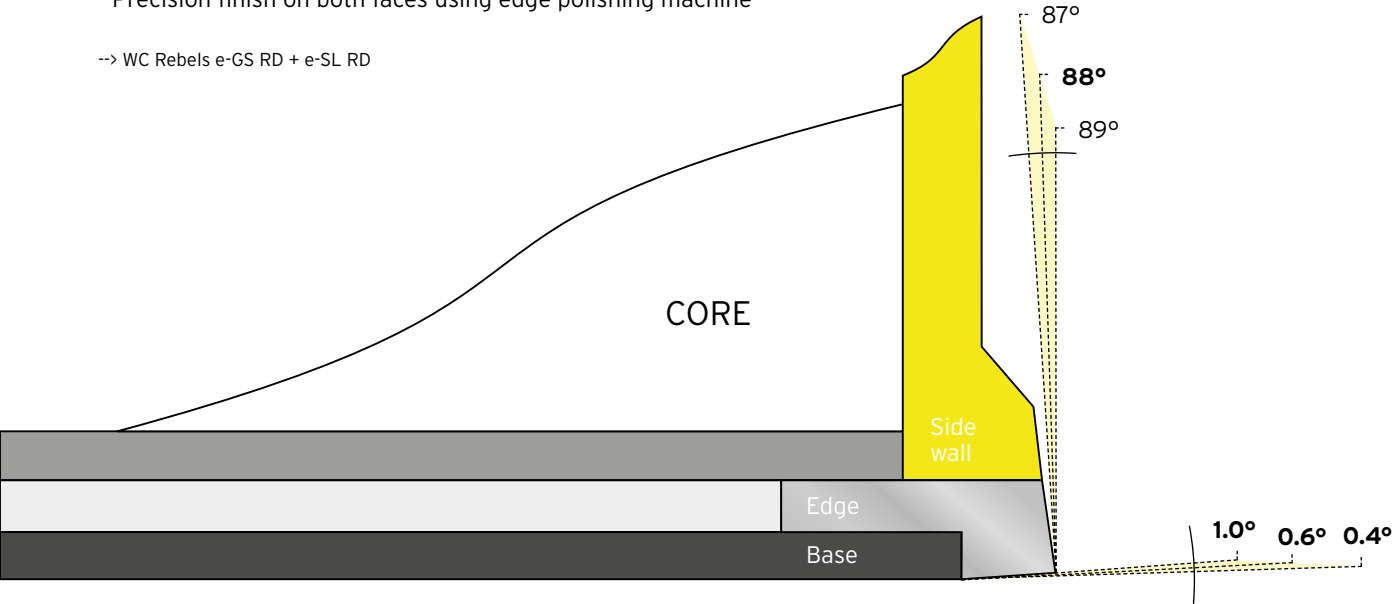
EDGE ANGLES

Edge angles:

Side: 88°
Below: 0.4° / 0.6° / 1.0°

- Edges are broken at front and rear ends
- Precision finish on both faces using edge polishing machine

--> WC Rebels e-GS RD + e-SL RD

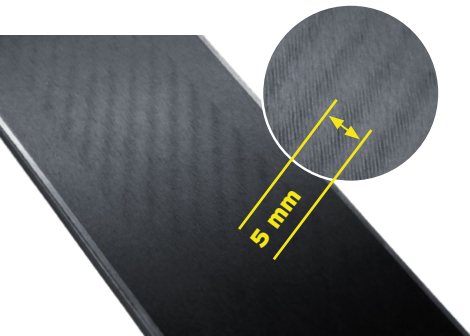


BASE STRUCTURE

Structure 3 + 4

A stepped cut is used for these structures so that the structure/cut is only as wide as the centre width of the ski. The advantage is that the structure does not run into the edge and the tuning remains unaffected.

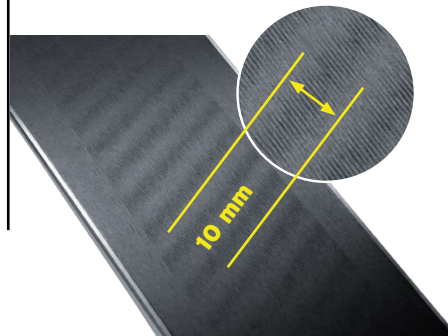
Other manufacturers usually have a structure run the entire length of the edge which is not ideal and may lead to the ski jolting. There are also fewer stone scores so gliding performance is improved.



Structure difference

Structure 3: 5 mm
Structure 4: 10 mm

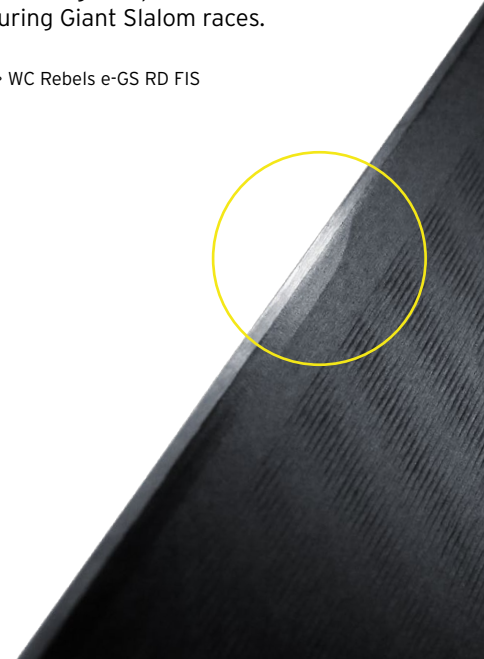
Improved turnability with structure 3, even at lower speeds.



Replaceable base strips

Base Insert with hard base to prevent base burning out at higher speed during Giant Slalom races.

--> WC Rebels e-GS RD FIS



BASE MATERIAL

Okulen 7150C:

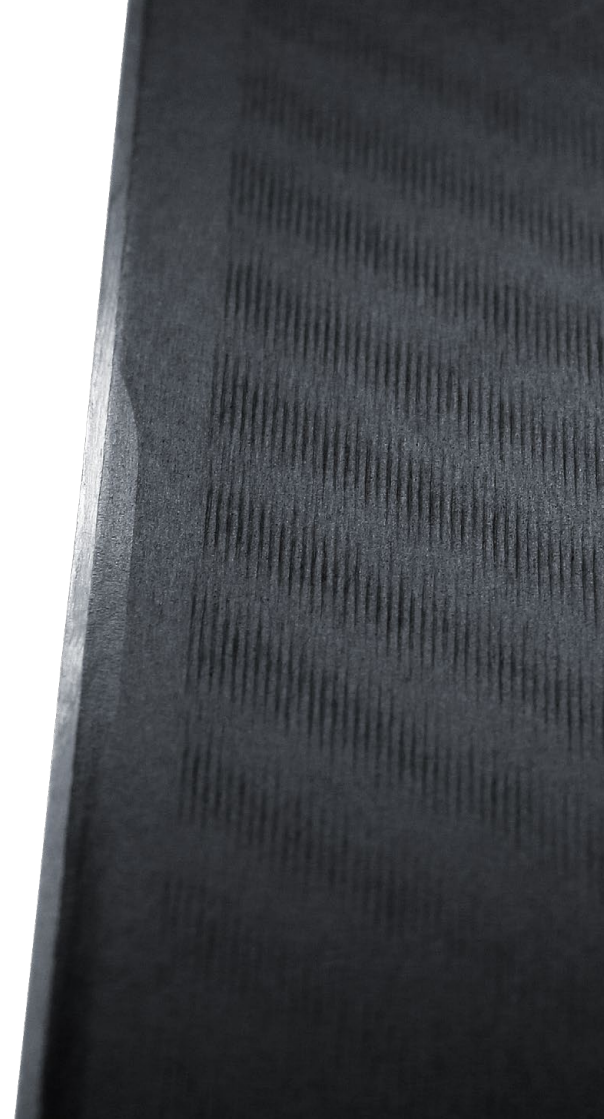
A sintered polyethylene PE base (does not contain fluorine), that is able to absorb more wax to deliver even better/faster gliding properties.

P-TEX 5188:

Slightly harder base because the speed is not as high as for Giant Slalom. Ideally suited to Slalom skis as a result.

P-TEX 5920 E:

This base covers a wide range of temperatures to ensure high speeds. Described as an all-rounder - takes a bit longer to really get going - but with proper care goes like a rocket on every type of snow.



HEAD[®]
.COM